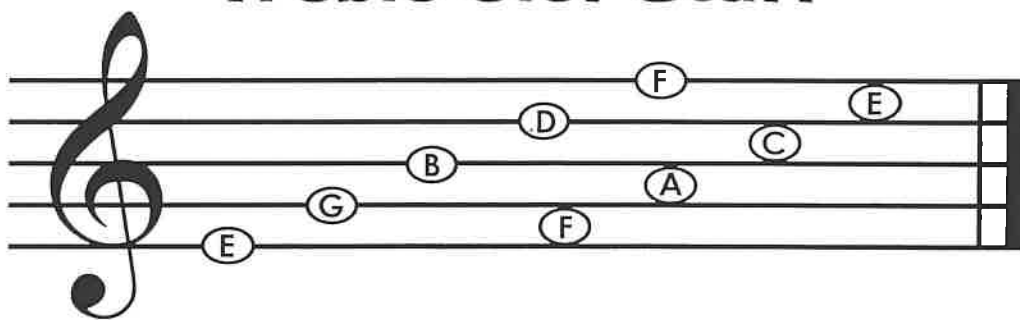


# Welcome to Hot Tunes!













## A few reminders...

- left hand on top
- tilt recorder down
- cover holes tightly
- breathe gently ... warm air
- begin each note with "duh"

## Treble Clef Staff



## Note Values and Rests

whole note		whole rest		4 beats
dotted half note		dotted half rest		3 beats
half note		half rest		2 beats
quarter note		quarter rest		1 beat
eighth note		eighth rest		1/2 beat
sixteenth note		sixteenth rest		1/4 beat

Name \_\_\_\_\_

Classroom Teacher \_\_\_\_\_

# Activity #1

Name \_\_\_\_\_

Identify the notes to determine each word.

A musical staff in treble clef with a key signature of one sharp (F#). It contains three quarter notes: G4 (first space), A4 (second space), and B4 (third space). Below the staff is a dashed line for identifying the word.

A musical staff in treble clef with a key signature of one sharp (F#). It contains six quarter notes: C5 (first line), B4 (third space), A4 (second space), G4 (first space), F4 (first space), and E4 (first space). Below the staff is a dashed line for identifying the word.

A musical staff in treble clef with a key signature of one sharp (F#). It contains seven quarter notes: G4 (first space), A4 (second space), B4 (third space), C5 (first line), B4 (third space), A4 (second space), and G4 (first space). Below the staff is a dashed line for identifying the word.

A musical staff in treble clef with a key signature of one sharp (F#). It contains six quarter notes: C5 (first line), B4 (third space), A4 (second space), G4 (first space), F4 (first space), and E4 (first space). Below the staff is a dashed line for identifying the word.

A musical staff in treble clef with a key signature of one sharp (F#). It contains seven quarter notes: G4 (first space), A4 (second space), B4 (third space), C5 (first line), B4 (third space), A4 (second space), and G4 (first space). Below the staff is a dashed line for identifying the word.

A musical staff in treble clef with a key signature of one sharp (F#). It contains seven quarter notes: G4 (first space), A4 (second space), B4 (third space), C5 (first line), B4 (third space), A4 (second space), and G4 (first space). Below the staff is a dashed line for identifying the word.

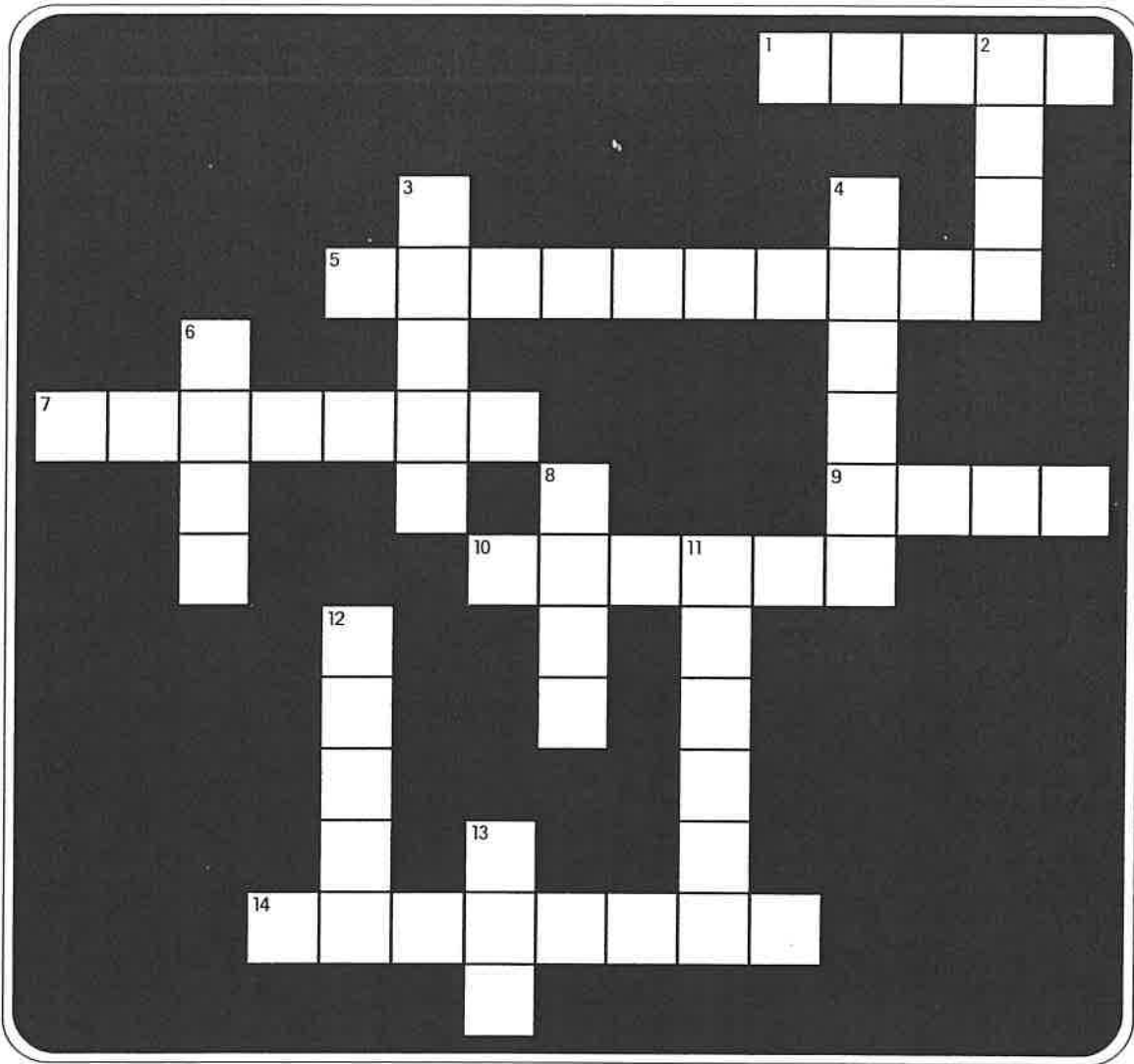
A musical staff in treble clef with a key signature of one sharp (F#). It contains seven quarter notes: G4 (first space), A4 (second space), B4 (third space), C5 (first line), B4 (third space), A4 (second space), and G4 (first space). Below the staff is a dashed line for identifying the word.

A musical staff in treble clef with a key signature of one sharp (F#). It contains seven quarter notes: G4 (first space), A4 (second space), B4 (third space), C5 (first line), B4 (third space), A4 (second space), and G4 (first space). Below the staff is a dashed line for identifying the word.

# Activity #2

Name \_\_\_\_\_

Use the clues below to complete the crossword puzzle.



**Across**

- 1. It has five lines
- 5. Top of the recorder
- 7. Note worth one beat
- 9. Which way you tilt the recorder
- 10. Breathe \_\_\_\_\_
- 14. Ancestor of the flute

**Down**

- 2. Names of spaces
- 3. Cover \_\_\_\_\_ tightly
- 4. Another word for tune
- 6. Note worth two beats
- 8. Bottom of the recorder
- 11. \_\_\_\_\_ clef
- 12. Note worth four beats
- 13. Left hand on \_\_\_\_\_

Name \_\_\_\_\_

Classroom Teacher \_\_\_\_\_

# Activity #3

Name \_\_\_\_\_

## Word Search

N	X	X	T	X	G	B	E	E	F	O	L	O	C	C	I	P	Z	V	I
Y	O	V	Y	E	S	H	I	I	D	E	B	U	S	S	Y	X	Y	S	N
T	V	I	Z	L	N	S	B	D	V	L	E	V	A	R	T	P	H	P	O
S	Q	I	S	E	O	I	M	C	L	M	U	R	D	E	R	A	N	S	O
L	T	L	O	S	Y	P	R	H	K	A	K	G	N	O	O	F	N	S	S
S	P	R	T	L	U	I	H	A	A	D	V	N	F	X	M	R	V	L	S
N	X	T	I	R	A	C	F	O	L	R	Q	I	B	U	B	E	E	A	A
J	N	B	A	N	U	L	R	Q	N	C	B	E	V	E	O	N	T	B	B
C	U	R	J	B	G	M	M	E	P	E	E	H	H	Y	N	C	U	M	C
Z	S	A	O	M	U	U	P	I	P	T	D	C	K	E	E	H	L	Y	H
H	Y	S	L	K	R	T	N	E	H	R	E	S	J	N	M	H	F	C	O
K	G	S	G	D	S	T	D	O	T	L	V	G	O	O	N	O	Z	H	P
A	X	O	S	E	I	N	V	O	L	O	N	T	Z	H	I	R	S	S	I
J	C	S	M	M	A	E	H	O	K	T	J	A	G	P	L	N	L	A	N
Z	A	I	P	L	N	H	U	I	V	C	R	B	V	O	P	Q	N	R	J
B	H	A	P	H	C	X	A	T	N	T	D	Z	B	X	O	E	C	C	A
C	N	O	T	A	Q	H	P	L	E	D	N	A	H	A	J	M	K	Z	O
I	C	R	B	S	C	V	I	O	L	I	N	Z	Z	S	O	B	O	E	F
B	T	A	F	T	D	O	U	B	L	E	B	A	S	S	X	W	V	K	H
E	J	C	U	P	W	O	O	D	W	I	N	D	C	X	T	G	Y	M	W

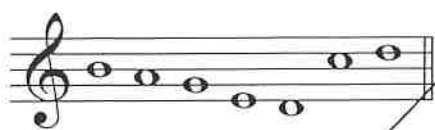
Find the following words and composers.

- |         |            |            |              |         |
|---------|------------|------------|--------------|---------|
| BRASS   | WOODWIND   | PERCUSSION | STRING       | PICCOLO |
| FLUTE   | CLARINET   | OBOE       | SAXOPHONE    | BASSOON |
| TRUMPET | FRENCHHORN | TROMBONE   | TUBA         | VIOLIN  |
| VIOLA   | CELLO      | DOUBLEBASS | CRASHCYMBALS | TIMPANI |
| CHIMES  | XYLOPHONE  | BASSDRUM   | SNAREDRUM    | BACH    |
| BRAHMS  | BEETHOVEN  | CHOPIN     | TCHAIKOVSKY  | HANDEL  |
| MOZART  | JOPLIN     | COPLAND    | RAVEL        | DEBUSSY |
| VIVALDI |            |            |              |         |

# Activity #5

Name \_\_\_\_\_

Transfer the rhythm shown on the right to the staff below, creating a melody for soprano recorder. Use any combination of the following pitches:



Remember: A good melody has repetition!