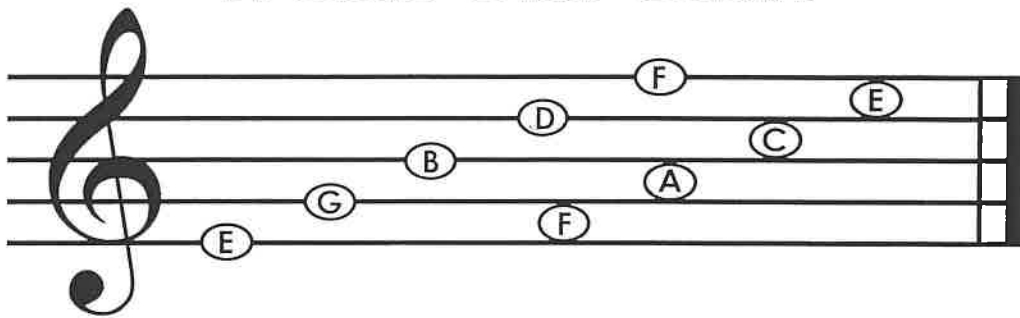


Welcome to Hot Tunes!













A few reminders...

- left hand on top
- tilt recorder down
- cover holes tightly
- breathe gently ... warm air
- begin each note with "duh"

Treble Clef Staff



Note Values and Rests

whole note		whole rest		4 beats
dotted half note		dotted half rest		3 beats
half note		half rest		2 beats
quarter note		quarter rest		1 beat
eighth note		eighth rest		1/2 beat
sixteenth note		sixteenth rest		1/4 beat

Lesson 1: The Staff

Name _____

Classroom Teacher

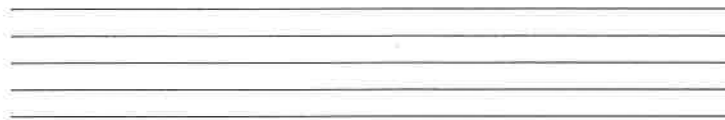
The musical **staff** is made up of five **lines** and four **spaces**.

Line 5 _____ Space 4
Line 4 _____ Space 3
Line 3 _____ Space 2
Line 2 _____ Space 1
Line 1 _____

1. Practice drawing a staff by connecting the hyphens.



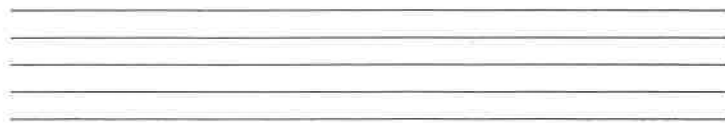
2. On this staff, number the lines from low to high.



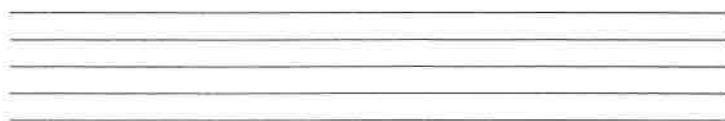
3. On this staff, number the spaces from low to high.



4. Draw a note on each line of the staff below.



5. Draw a note on each space of the staff below.

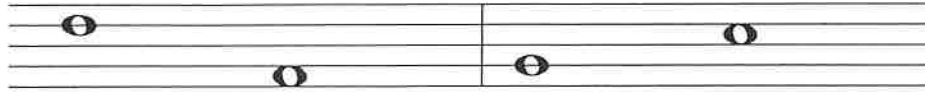


Name _____

The Staff - High and Low

Classroom Teacher _____

Musical sounds (low or high) are shown by the position of notes on the staff. Notes that are higher on the staff have a higher sound or pitch than those that are lower on the staff.



The first note sounds higher than the second note.

The first note sounds lower than the second note.

1. Draw a note on the indicated line or space, then circle the highest note you drew on the staff.



Line 3

Line 4



Space 1

Line 5

Line 2

Space 3

Line 1

2. Use an arrow to indicate whether the second note of each measure sounds higher  or lower  in pitch than the first note.



3. Use the letters H and L to indicate whether the first note of each measure sounds higher (H) or lower (L) in pitch than the first note.



The Staff - Treble Clef

Name _____

Classroom Teacher _____

At the beginning of each staff there is a clef. The treble clef (also known as G clef) looks like this:



The treble clef gives establishes a landmark on the note G on the 2nd line of the treble staff.

To draw the treble clef, draw:
the line and tail

the top loop

the left loop

the right loop

the curl



1.



2.



3.

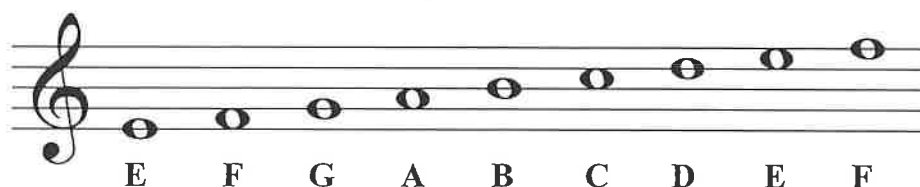


4.

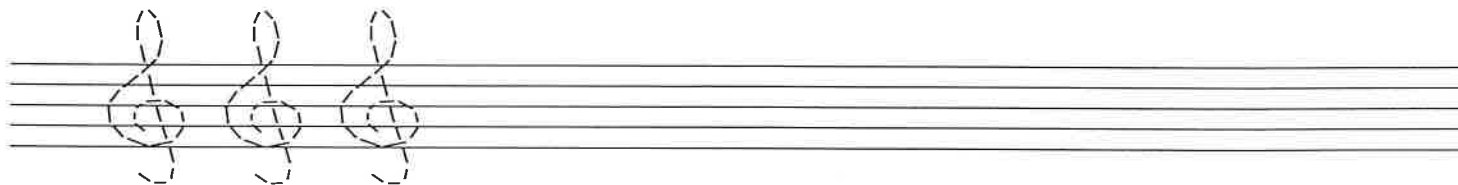


5.

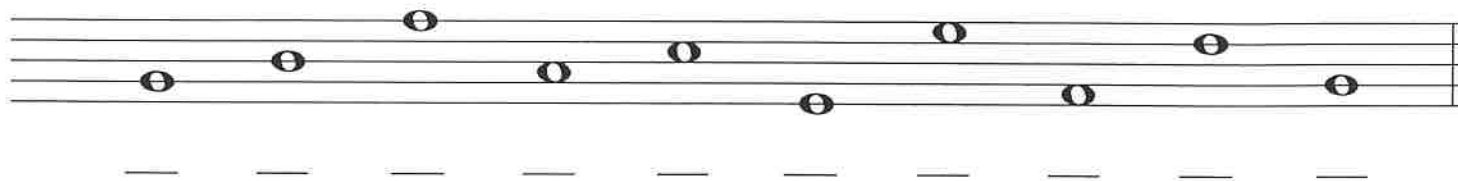
Notes are named after the first seven letters of the alphabet (A through G).



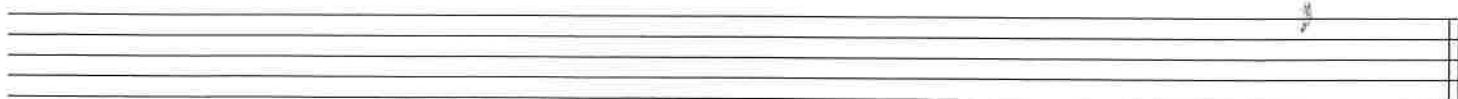
1. Try drawing the treble clef sign by tracing over the dotted lines. Then draw five more of your own.



2. Draw a treble clef at the beginning of the staff. Then write the letter names of each note.



3. Draw a treble clef at the beginning of the staff. Then draw the notes indicated. If a note can be written on more than one place on the staff, choose one.



G E B C D B A C D F

Name _____

The Staff - Bass Clef

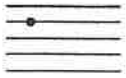
Classroom Teacher _____

The bass clef (also known as F clef) looks like this:



The bass clef gives a landmark on the note F on the 4th line of the bass staff.

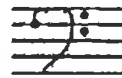
To draw the bass clef, draw:
a black dot



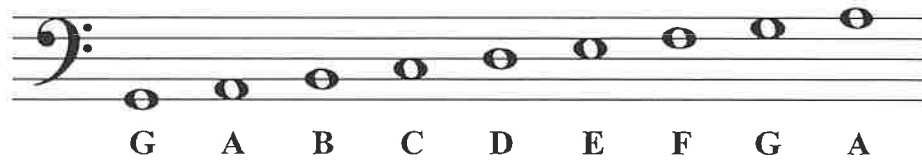
a curve



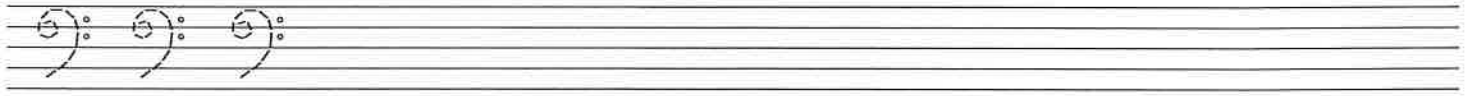
two dots



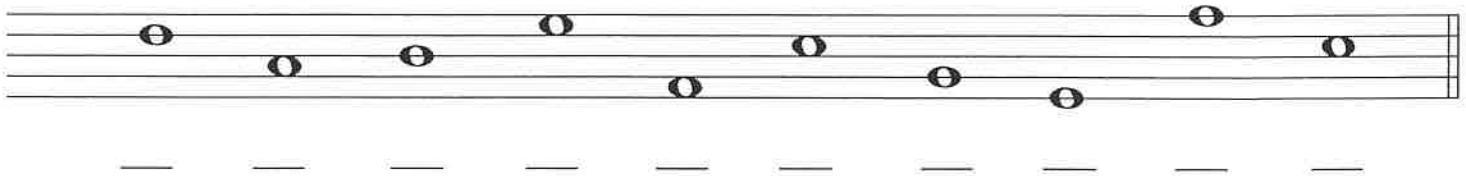
Notes are named after the first seven letters of the alphabet (A through G).



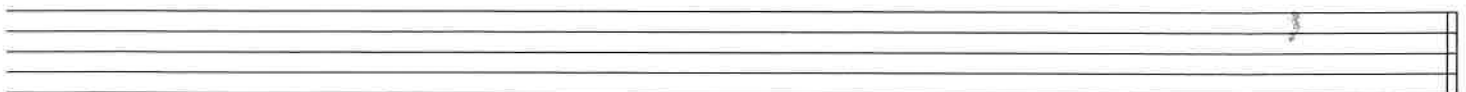
1. Try drawing the bass clef sign by tracing over the dotted lines. Then draw five more of your own.



2. Draw a bass clef at the beginning of the staff. Then write the letter names of each note.



3. Draw a treble clef at the beginning of the staff. Then draw the notes indicated. If a note can be written on more than one place on the staff, choose one.



F G A D F C B G D E

Lesson 5: Note Reading Worksheet

Classroom Teacher _____

Treble Clef Line Notes

E G B D F
Every Good Boy Does Fine

Treble Clef Space Notes

F A C E
F A C E

Bass Clef Line Notes

G B D F A
Great Big Dragons Fly Around

Bass Clef Space Notes

A C E G
All Cows Eat Grass

Please indicate the following notes on the indicated space.

❖ Challenge! Please indicate the following notes that lie outside of the staff.

Name

Classroom Teacher

Lesson 6: Basic Rhythm: Note Types and 4/4 Time

The duration of musical sounds is indicated by different types of notes. These indicate how long or short to hold the note.

quarter note
1 beat



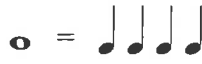
half note
2 beats



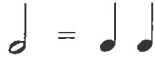
whole note
4 beats



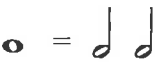
One whole note equals four quarter notes.



One half note equals two quarter notes.



One whole note equals two half notes.



Time signatures are placed at the beginning of a piece of music. They are made up of two numbers.



The top number shows the number of beats per measure.

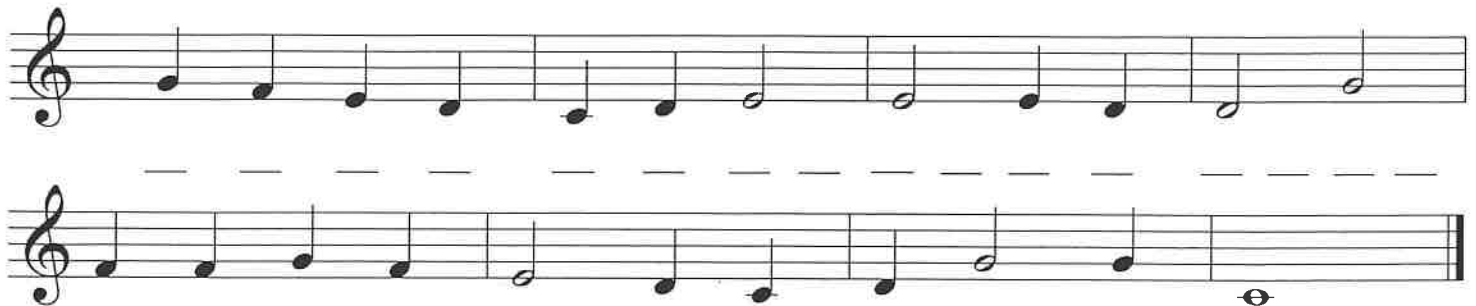
The bottom number shows what kind of note will get one beat.

In $\frac{4}{4}$ time there are four beats in each measure. A quarter note gets one beat.

1. Clap the rhythm of the notes while counting the beats out loud.



2. Write a $\frac{4}{4}$ time signature after the clef sign. Write in the beat below the notes indicated. Then clap the rhythm while counting the beats out loud.






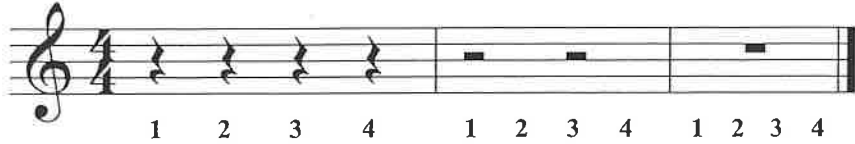
3. Write a $\frac{4}{4}$ time signature after the clef sign. Write in the beat below the notes indicated. Draw the missing bar lines.



Lesson 7: Basic Rhythm - Rests and Stems

The duration of musical silence is indicated by different types of rests.

quarter rest 1 beat 	half rest 2 beats 	whole rest 4 beats 
--	--	---



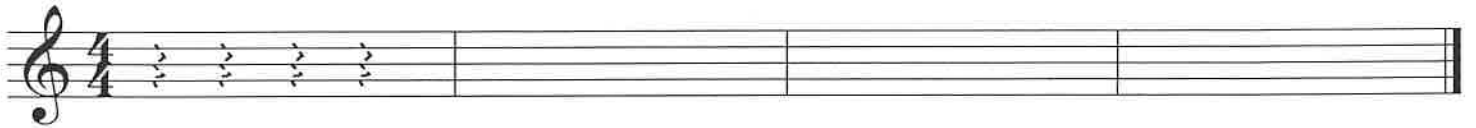
There are rules to follow when drawing stems on half notes and quarter notes.

If the notes are on or above the third line, the stems for half notes and quarter notes are drawn downward on the left side of the notehead.

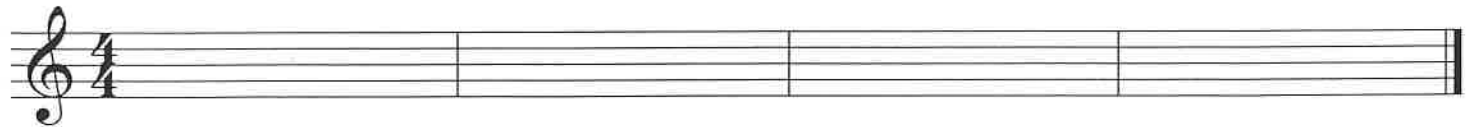
If the notes are below the middle line, the stems are drawn upward on the right side of the notehead.



1. Practice drawing quarter rests by tracing over the dotted lines. Draw four quarter rests in each blank measure.



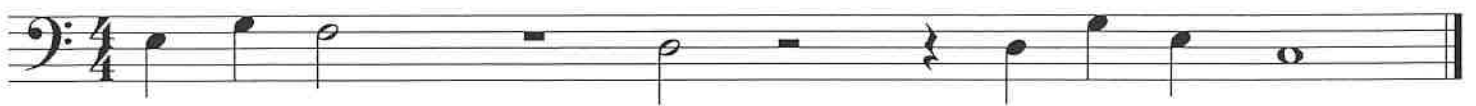
2. Draw two half rests in each of the first 2 measures. Then draw one whole rest in each of the last 2 measures.



3. Write the count below the rests.



4. Write the count below the notes and rests, then add the missing bar lines.



5. Draw the appropriate stems on the following noteheads.

